



MODESTO 2050

Our City. Our Future.

Community Workshop | March 30, 2022



Workshop Agenda

- Welcome and Introductions
- Presentation
- Q&A
- Small Group Discussions
- Reports Back
- Next Steps



Modesto 2050 General Plan Update

The City's long-term plan to address land use, transportation, economic development, resiliency, environmental justice, and other important issues

- Addresses the city's long-term future and plans ahead toward 2050
- Establishes a community vision and supporting goals, policies, and actions
- Balances growth, conservation, and quality of life
- Guides decisions about transportation, economic development, housing, parks, shopping, services, and more



Existing Urban Area General Plan

- City's prior comprehensive General Plan Update in 1995
- Several General Plan amendments since then
- Policy changes have supported mixed-use infill along transportation corridors



Corridor Development Concepts

General Plan “Elements”

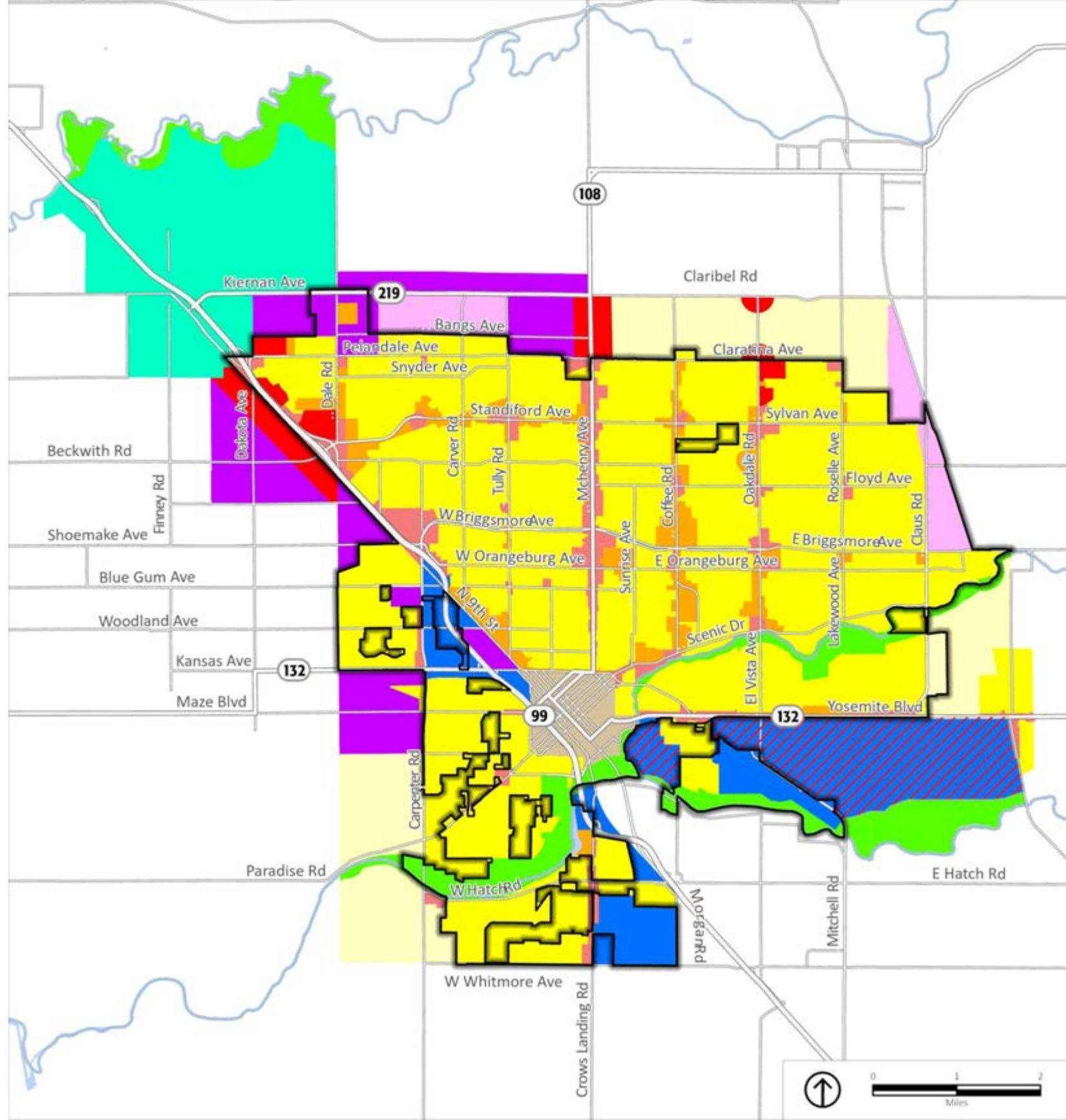
» Required Topics:

- Land Use
- Transportation
- Safety
- Noise
- Open Space
- Conservation
- Environmental Justice
- Air Quality
- Housing



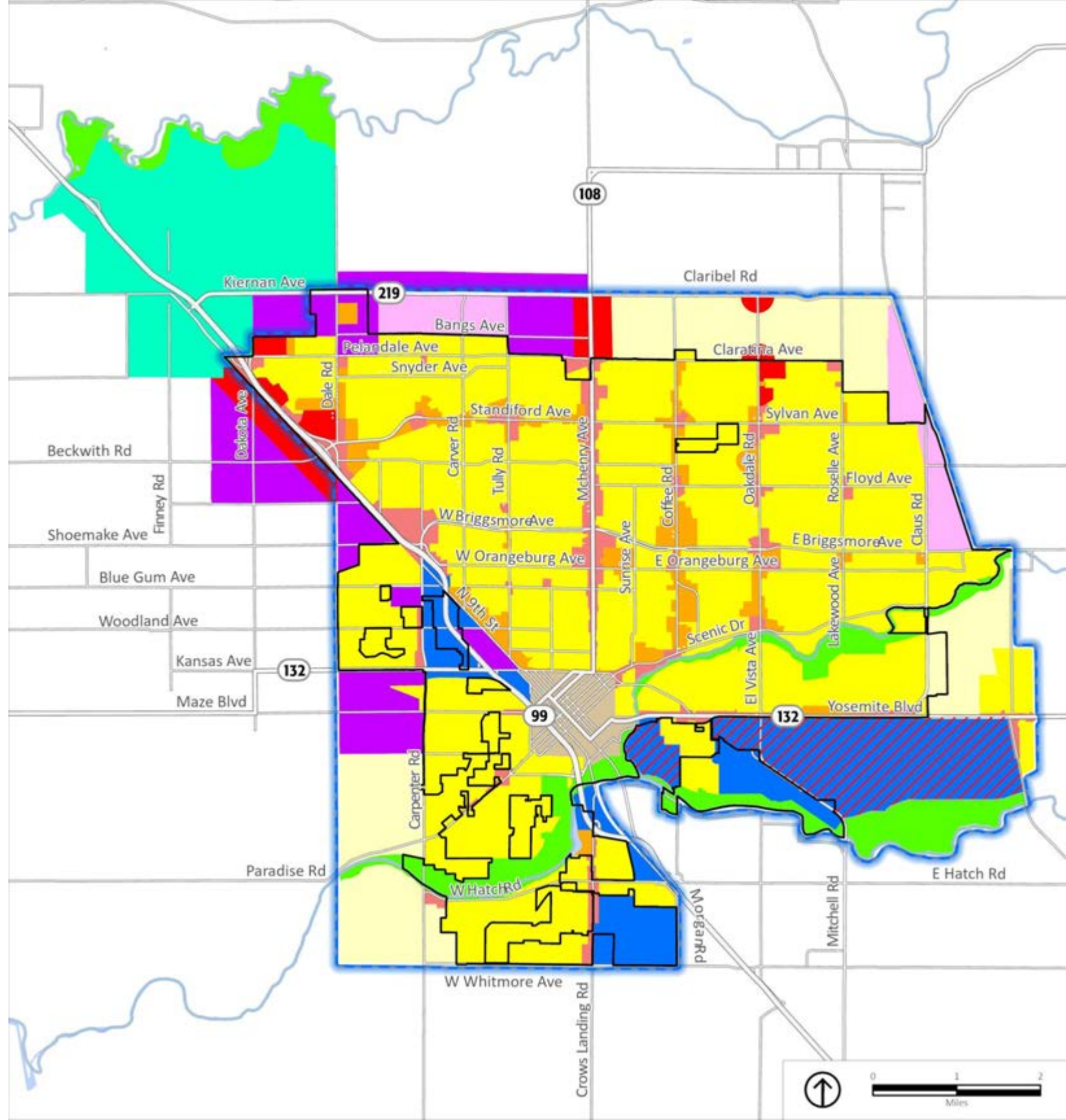
General Plan Land Use Map

-  City Limit
-  Primary Unincorporated Industrial Area
- General Plan Land Use Designations
 -  Residential
 -  Village Residential
 -  Mixed Use
 -  Downtown
 -  Commercial
 -  Regional Commercial
 -  Business-Commercial-Residential
 -  Industrial
 -  Business Park
 -  Open Space
 -  Salida Community Plan



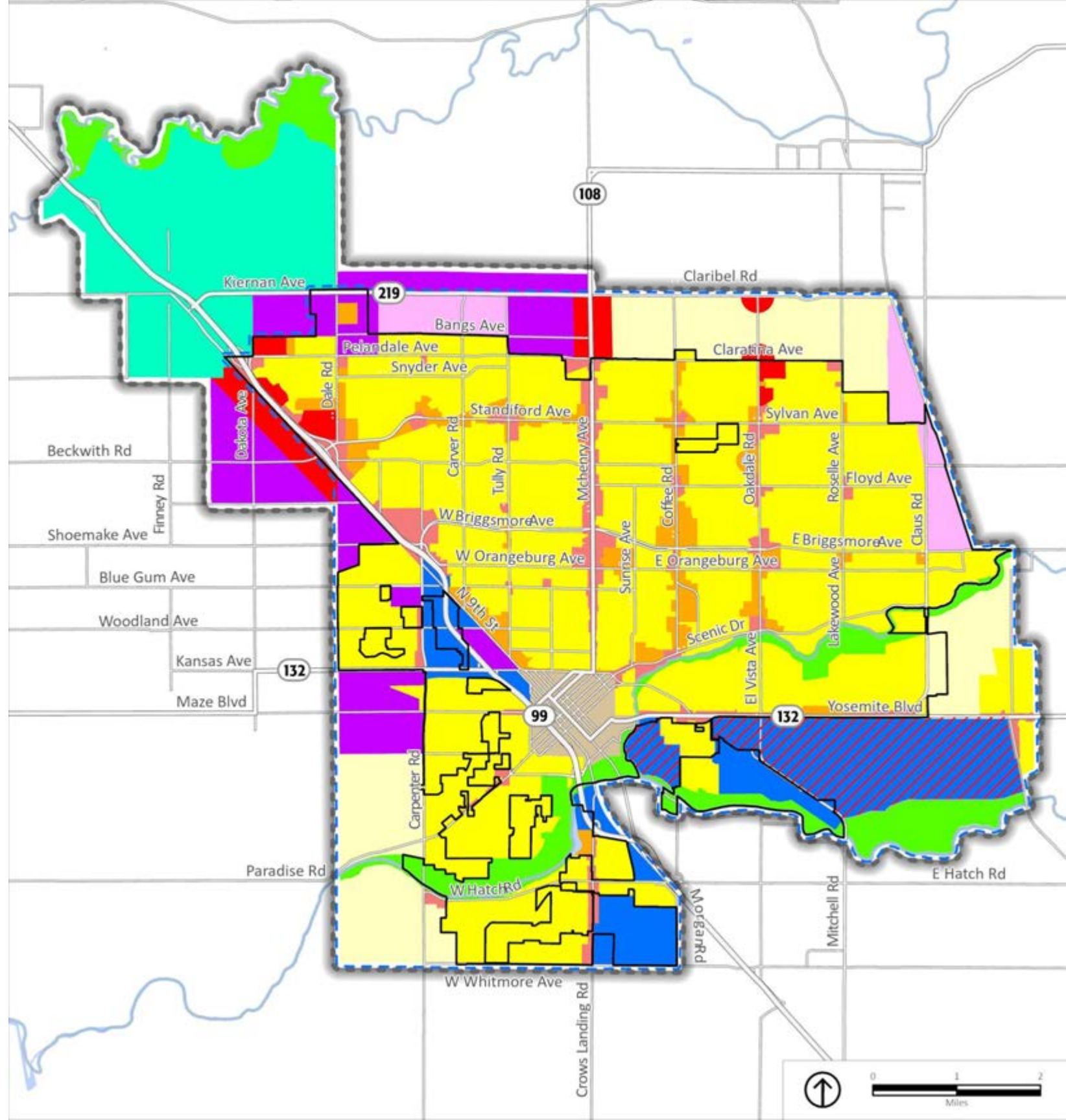
General Plan Land Use Map

-  City Limit
 -  Sphere of Influence
 -  Primary Unincorporated Industrial Area
- General Plan Land Use Designations
-  Residential
 -  Village Residential
 -  Mixed Use
 -  Downtown
 -  Commercial
 -  Regional Commercial
 -  Business-Commercial-Residential
 -  Industrial
 -  Business Park
 -  Open Space
 -  Salida Community Plan



General Plan Land Use Map

-  City Limit
 -  Sphere of Influence
 -  Planning Area
 -  Primary Unincorporated Industrial Area
- General Plan Land Use Designations**
-  Residential
 -  Village Residential
 -  Mixed Use
 -  Downtown
 -  Commercial
 -  Regional Commercial
 -  Business-Commercial-Residential
 -  Industrial
 -  Business Park
 -  Open Space
 -  Salida Community Plan



How Does the General Plan Affect You?

- Neighborhoods
- Jobs
- Shopping
- Roadways
- Schools and Parks



General Plan Update Process



» Visioning and Public Engagement **Through March 2022 and ongoing**

- Establish the community's vision for Modesto in 2050
- Document baseline conditions in Modesto in an online Briefing Book – available now:

gp2050.modestogov.com/documents/



Opportunities to Participate

Sign up online to be notified of upcoming events and see documents.

- Website: gp2050.modestogov.com
- Online Surveys
- Community Workshops
 - » Virtual
 - » In person
- Pop-up events
- Focus Groups
- Planning Commission
- City Council

Participate Online
 **Wish List Word Cloud**



Workshop Exercise

- Small Group Discussions (50 mins)
- Questions:
 - » **Things to Keep:** What do you like most about Modesto?
 - » **Things to Change:** What would you like to see changed in Modesto to make it a better place to live and work?
 - » **Topics to Address:** Ranking exercise to help prioritize issues to be addressed as part of the General Plan Update.
 - » **Future Development:** Where should future development be focused?



Workshop Exercise

- **Recap (10 mins)**
 - » Choose a representative from your small group
 - » Review notes and identify what your representative will report back to the larger group
 - » Keep reports brief (1 to 2 minutes)



Q&A



Next Steps

- Draft community vision
- Land use alternatives
- Monitor website for updates:
gp2050.modestogov.com/





Thank you

